

ULTERIOR

Selena Kimball

Ghosts in

September 14—October 21, 2023



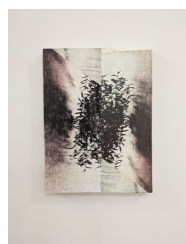
Selena Kimball

Untitled Times, sec. 05 (flock), 2023

Unique hand-pulled CMYK silkscreen on linen, four panels

63 x 168 x 1 1/4 in (160 x 426.7 x 3.2 cm)

KIMse-005



Selena Kimball

Here I Am, 2023

Unique hand-pulled CMYK silkscreen on linen, on panel

12 x 9 in x 3/4 in (30.5 x 22.9 cm)

KIMse-010



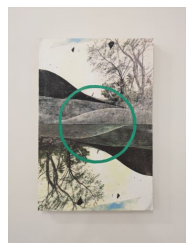
Selena Kimball

Untitled Times, sec. 06 (dome), 2022

Unique hand-pulled CMYK silkscreen on wood, two panels

63 x 76 1/2 x 2 in (160 x 194.3 x 5.1 cm)

KIMse-004



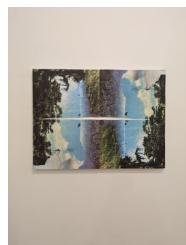
Selena Kimball

Face of the deep, 2023

Unique hand-pulled CMYK silkscreen on linen, plaster, graphite, and oil on panel

24 x 16 x 1 1/2 in (61 x 40.6 x 3.8 cm)

KIMse-008



Selena Kimball

The skies rolled up like a scroll, 2023

Unique hand-pulled CMYK silkscreen on linen and plaster, on panel

18 x 24 x 1 in (45.7 x 61 x 2.5 cm)

KIMse-011

ULTERIOR



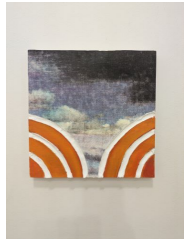
Selena Kimball
Untitled Times, sec. 10 (palm trees), 2023
Unique hand-pulled CMYK silkscreen on linen
63 x 38 in (160 x 96.5 cm)
KIMse-006



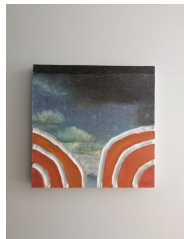
Selena Kimball
Inventory of Jefferson's Garde Plots, 2020
Acrylic on watercolor paper
22 ⁵/₈ x 14 ⁷/₈ in (57.5 x 37.8 cm)
KIMse-013



Selena Kimball
Ah, Ah (Ha, Ha), 2023
Silkscreen, plaster, wood, oil paint, Thomas Jefferson's bible (First Edition, 1904)
51 ¹/₂ x 36 x 76 in (130.8 x 91.4 x 193 cm)
KIMse-007



Selena Kimball
Safe Passage (part one), 2023
Unique hand-pulled CMYK silkscreen on linen, plaster, and acrylic on panel
10 x 10 x 1 in (25.4 x 25.4 x 2.5 cm)
KIMse-009



Selena Kimball
Safe Passage (part two), 2023
Unique hand-pulled CMYK silkscreen on linen, plaster, and acrylic on panel
10 x 10 x 1 in (25.4 x 25.4 x 2.5 cm)
KIMse-012